



# PUKEKOHE HIGH SCHOOL

## SPONSORSHIP PACKAGES





# WELCOME TO PUKEKOHE HIGH SCHOOL

## ABOUT *PUKEKOHE HIGH SCHOOL*

We are at an exciting stage in our one-hundred-year history, with an expanding student roll and improved facilities and opportunities for our students. We aim to provide a holistic education for our learners with a strong emphasis on academic qualifications, co-curricular experiences, student leadership and pastoral care. We have high expectations for our young people in terms of their effort, behaviour and attendance.

Providing learning experiences that will enable all our students to develop the skills, attributes and qualifications that they will need in life beyond school, is at the heart of our work. We place an emphasis on choice throughout our curriculum to meet the needs of our diverse student body.

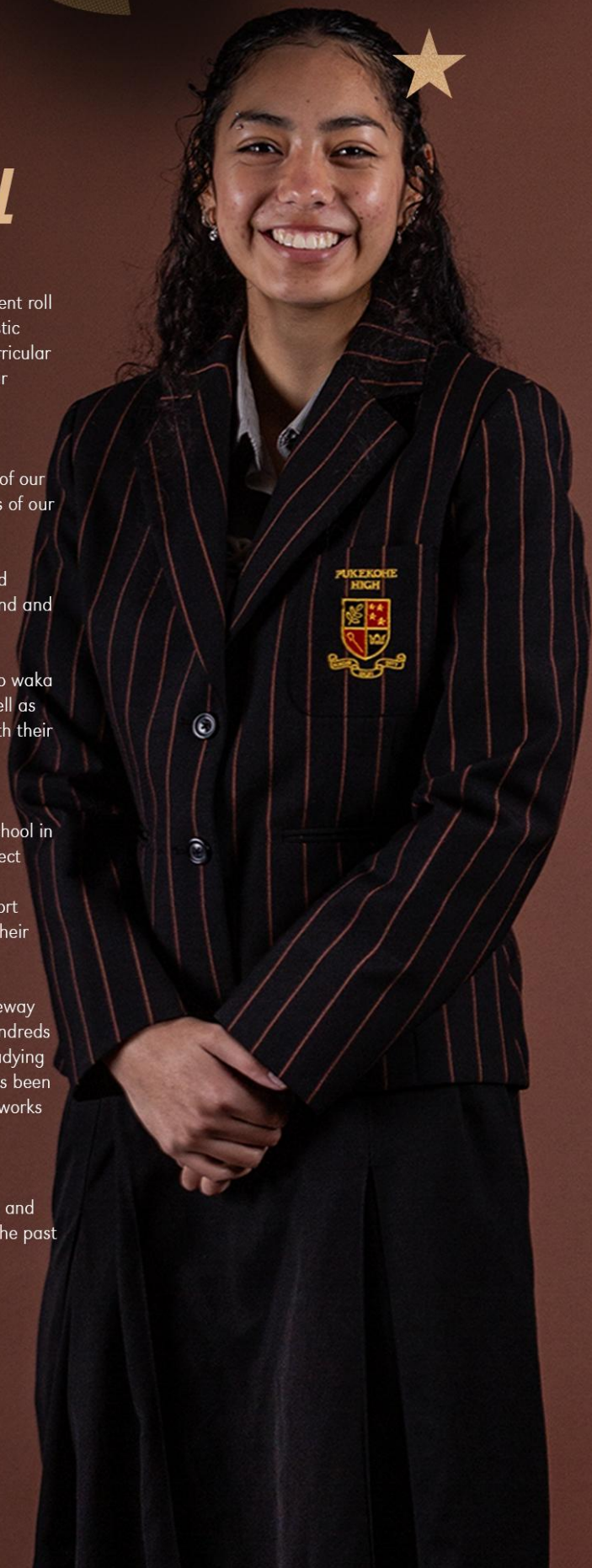
Our Pukekohe High School Values of Manaakitanga, Kotahitanga, Puumautanga and Araahitanga are critical in preparing our students for life in 21st century New Zealand and the wider world. Living these values help shape good learners and good people.

Encouraging resilience and wellbeing are vital. Involvement in sport, from athletics to waka ama, is a strength of our school and is key to developing a sense of enjoyment as well as physical and mental wellbeing. Opportunities for students to explore and engage with their cultural heritage through involvement in groups such as kapa haka are becoming increasingly important at our school.

We have long held close links with our local community, being the only secondary school in Pukekohe and having celebrated our centenary in 2021. We offer students 128 subject options in the senior school and 50 in the junior school across 9 faculty areas. From commerce to catering, motion special effects to media studies and psychology to sport leadership, our students have the opportunity to explore their interests and nurture their passions.

Our students connect with our community in various ways, such as through our Gateway programme and the Pukekohe Mural project. The Gateway programme has seen hundreds of senior students placed into local businesses to gain work experience, while still studying at school, with many gaining employment after leaving school. The Mural project has been a collaboration with Eke Panuku and multiple local businesses which has seen 4 art works placed around the township by local artists with assistance from our art students.

Our young people consistently contribute to, and gain from, these relationships in meaningful ways. With our newly formed Alumni Committee, we plan to re-establish and foster valuable links with our past students to ensure that we continue to celebrate the past while looking to the future.





# WELCOME TO PUKEKOHE HIGH SCHOOL

## WHY SPONSOR?

The school's mission is to provide a safe, positive, engaging and inclusive learning environment where our students gain the knowledge, skills and personal qualities to become contributing members of society. We want to ensure that Pukekohe High School graduates are self-motivated young people who are resilient, reliable and eager to embrace life after school.

Fostering positive relationships within the local community is very important to us as a school. We understand that ongoing community support is an essential element in ensuring that our school functions in a way that gives our students every opportunity to succeed.

We would welcome the opportunity to work together for mutually beneficial outcomes for the school and the wider community. To facilitate this initiative, the school has launched a School Sponsors program to help fund various projects and plans. These efforts are focused on enhancing student achievement, expanding opportunities, and improving school resources, all with the goal of enriching education and empowering students to realise their full potential.

100% of your contribution is used to support the current and future students of the school.

## BENEFITS OF SPONSORSHIP

The school's mission is to provide a safe, positive, engaging and inclusive learning environment where our students gain the knowledge, skills and personal qualities to become contributing members of society. We want to ensure that Pukekohe High School graduates are self-motivated young people who are resilient, reliable and eager to embrace life after school.

Fostering positive relationships within the local community is very important to us as a school. We understand that ongoing community support is an essential element in ensuring that our school functions in a way that gives our students every opportunity to succeed.

We would welcome the opportunity to work together for mutually beneficial outcomes for the school and the wider community. To facilitate this initiative, the school has launched a School Sponsors program to help fund various projects and plans. These efforts are focused on enhancing student achievement, expanding opportunities, and improving school resources, all with the goal of enriching education and empowering students to realise their full potential.

100% of your contribution is used to support the current and future students of the school.



## ***SPONSORSHIP LEVELS***

**VALUE EQUATES TO SPONSORSHIPS IN THE FORM OF  
FINANCIAL, MEDIA, IN-KIND, SUCH AS EQUIPMENT OR PRIZES.**

WE CAN CRAFT SPONSORSHIP PACKAGES TAILORED TO ALIGN SEAMLESSLY WITH YOUR ***BUSINESS*** GOALS AND GIVING PRIORITIES. WHETHER IT'S ***SPORTS, MUSIC, THE ARTS***, OR ENABLING STUDENTS TO PARTICIPATE IN ACTIVITIES THEY MIGHT OTHERWISE MISS OUT ON, WE CAN HELP YOU MAKE A ***MEANINGFUL IMPACT.***

 <b>PUKEKOHE</b> HIGH SCHOOL	<b><i>PLATINUM</i></b>	<b><i>GOLD</i></b>	<b><i>MAROON</i></b>	<b><i>BLACK</i></b>
<b><i>SPONSORSHIP VALUE</i></b>	\$10,000 +	\$6000 - \$9500	\$4000 - \$5500	\$2500 - \$3500
<b><i>ADVERTING IN ANNUAL HILL MAGAZINE</i></b>	FULL PAGE	FULL PAGE	HALF PAGE	HALF PAGE
<b><i>SOCIAL MEDIA ACKNOWLEDGEMENT</i></b>	TERMLY	TERMLY	2 TERMS	1 PUBLICATION
<b><i>NEWSLETTER ACKNOWLEDGEMENT</i></b>	1 YEAR DURATION	2 TERMS	1 TERM	1 PUBLICATION
<b><i>LOGO ON PUKEKOHE HIGH SCHOOL WEBSITE</i></b>	1 YEAR DURATION	2 TERMS	1 TERM	
<b><i>SIGNAGE UNDER ELECTRIC SIGN ON HARRIS STREET</i></b>	1 YEAR DURATION	2 TERMS	1 TERM	
<b><i>SIGNAGE ON FRONT HARRIS STREET FENCE</i></b>	1 YEAR DURATION	2 TERMS	1 TERM	
<b><i>LOGO ON SOCIAL MEDIA TILES</i></b>	1 YEAR DURATION	2 TERMS		
<b><i>INVITES TO ALUMNI EVENTS</i></b>	1 YEAR DURATION			
<b><i>INVITES TO SCHOOL PRIZEGIVING'S</i></b>	1 YEAR DURATION			





# RECENT STUDENT ACHIEVEMENTS

WELCOME TO  
FRANKLIN



EZEKIEL OTUNUKU

SIGNS FOR SALSBNL 24



## Congratulations

**Willow Thomson** - Best Trombonist  
**Daniel Potter** - Best Big Band Drummer  
**Danica Newby** - Judges Special Mention for  
Vibes & Percussion Playing  
**National Youth Jazz Competition**



Willow



Daniel



Danica



## Congratulations

**Raquel Sheldon**

achieves further Arts success:

*First Place* - Taupo Creative Carnival

*First Place* - The Franklin Arts Show

Youth Category



## Congratulations

**PHS Cultural Groups**  
Performing at ASB Polyfest

**Kapa Haka group**  
2nd Place Overall Division 2



## Congratulations

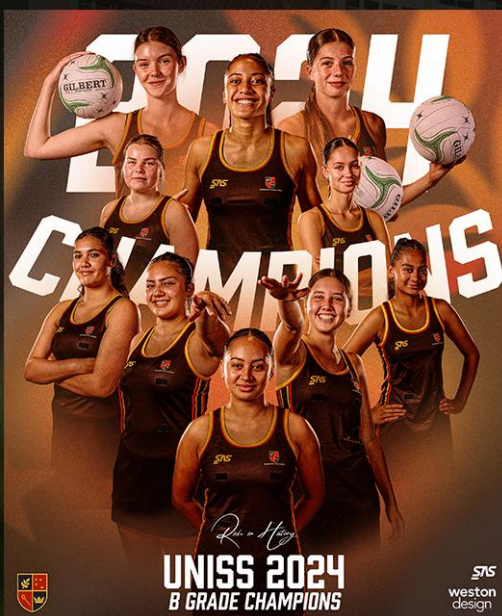
**Raquel Sheldon**

achieves further Arts success:

*First Place* - Taupo Creative Carnival

*First Place* - The Franklin Arts Show

Youth Category



UNISS 2024  
B GRADE CHAMPIONS

SPS  
weston  
design



## Congratulations

**Zeb McFarlane**

U14 and U15 NZ International

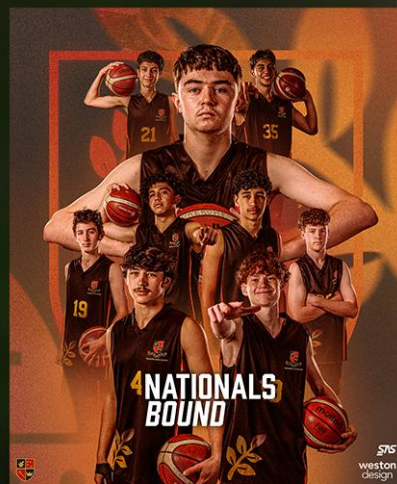
Softball Academy selection

U15 New Zealand Development Sox



SPS

SPS



4 NATIONALS  
BOUND

SPS  
weston  
design





# THANK YOU TO OUR *POTENTIAL SPONSORS*



*CONTACT FOR SPONSORSHIP*

## **PUKEKOHE HIGH SCHOOL**

*14 HARRIS STREET, PUKEKOHE*

*AUCKLAND, 2120*

*PO BOX 306, PUKEKOHE*

**PHONE:** 09 237 0117

**EMAIL:** [DEVELOPMENT@PUKEKOHEHIGH.SCHOOL.NZ](mailto:DEVELOPMENT@PUKEKOHEHIGH.SCHOOL.NZ)

**WWW.PUKEKOHEHIGH.SCHOOL.NZ**